



CROWNE PLAZA[®]

LIMASSOL

AN IHG HOTEL

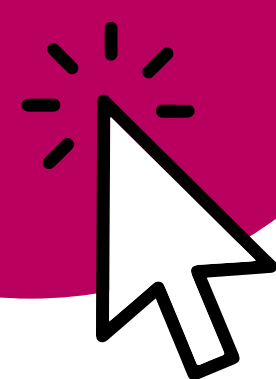
TAKE A
MOMENT
TO GET
ACQUAINTED.



CONTENTS



CLICKABLE
CONTENT



TOP TIPS

A short guide to make your stay more comfortable!

RESTAURANTS & BARS

La Brezza | [Menu Link](#)

Kai Sushi Bar | [Menu Link](#)

Lounge Bar & Grill | [Menu Link](#)

Med Restobar | [Menu Link](#)

Haven Breakfast | [Menu Link](#)

Lime Beach Bar | [Menu Link](#)

ROOM SERVICE

[Breakfast Menu Link](#)

[All Day Menu Link](#)

[Late Night Menu Link](#)

SPA & WELLNESS

[Outdoor Facilities](#)

[Indoor Facilities](#)

[Gym](#)

[Quick Spa](#)

SERVICES

[Laundry & Dry-Cleaning](#)

[TV & Radio Channels](#)

[Forgot something & Other conveniences](#)

ROOMS

[Select City View](#)

[Premium Sea View](#)

[Superior Sea View](#)

[Suites](#)

MEETING ROOMS

[Ballroom](#)

[Suite Sea](#)

[Executive Boardroom](#)

[Oval Meeting Room](#)

[Med Meeting Room](#)

DESTINATION GUIDE

[The Mountains](#)

[The Azure Trail](#)

[Dams & Villages](#)

[Cosmopolitan Limassol](#)

[Limassol Guide](#)

SUSTAINABILITY

[Our Journey To Tomorrow](#)



TOP TIPS

INSECT ADVICE

To avoid pesky mosquitoes and other insects flying into your room, we recommend keeping your windows closed when the lights are on and when leaving your room in the evening.

DRYING SWIMWEAR

In all bathrooms there is a clothes line attached the wall above the bath tub which can be drawn across the tub to dry your swimwear.

MOTION SENSOR SWITCHES

All our rooms are equipped with motion sensors. This means the electricity will switch off in your room if no movement is detected. There is a plug marked with a red sticker which remains on at all times.

SUSTAINABLE SOLUTION

MAGNETIC SENSORS

Balcony doors and windows in all rooms are equipped with magnetic sensors. This means that the HVAC will switch off if either the balcony door or window is open.

SUSTAINABLE SOLUTION

USB PORT

There is a USB port on the back of the TV for charging devices, if you do not have a charger compatible with UK or EU plugs.

GETTING AROUND

THE BUS

The number 30 bus is regular and stops at the Old Town / Marina. The bus stop is 100m from the hotel. Tickets can be purchased from the bus driver. Cash only.

[MORE INFO](#)

Children under 6 years old travel free!

TICKET TYPE	ADULT FARE
Daily Single	1,50
Night - Single	2,50
Daily Unlimited	5,00
Weekly	20,00
Monthly	40,00
Daily Intercity	15,00

ON FOOT

The Old Town / Marina is a pleasant 30 - 45 minute walk along the Limassol Seafront Promenade, depending on your pace. Exit the hotel and turn left.

BY TAXI

The Front Desk can call you a taxi anytime and they usually take between 5 and 15 minutes to arrive depending on the time of day. Airport transfers can be pre-booked at the Front Desk too!

BY BICYCLE

€ 2.5 for 60 mins | [MORE INFO](#)

INTERNET

1. Join the CROWNE PLAZA LIMASSOL network
2. Open a browser to access our landing page
3. Choose IN HOUSE GUEST as your access method
4. Fill in your room number and name, as it appears on your reservation
5. Choose FREE WIFI as your package
6. Accept the terms and conditions
7. Click CONNECT.

Prefer an enhanced internet experience? Paid packages are available. IP Address: 10.0.0.1

[BACK TO CONTENTS](#)

THE BARS & RESTAURANTS



LA BREZZA

Enjoy waterfront dining at our award winning Mediterranean fusion restaurant.

Hours: 1PM – 11PM

Days: MON, WED, THU, FRI, SAT, SUN

Cuisine: Mediterranean, Italian

Vibe: Island Chic

Season: All Year Round

RESERVATIONS: 3343



MENU PREVIEW

Halloumi Cheese Parcel

Quince apple chutney, phyllo pastry, fried celery

Stuffed Zucchini Blossoms

Edam, halloumi cheese, tomato confit

Chef Z's «Commandaria» Tagliolini

Morel mushrooms, sun-dried tomato, truffle cream sauce

Seafood Risotto

Tiger prawns, scallops and squid sautéed in white wine, tomatoes

Rolled Sea Bass

Citrus sauce, beetroot, crispy potatoes

24h Slow Cooked Pork Belly

Couscous, feta cheese, pine nuts, tomato confit, Commandaria jus

Amaretto Crème Brûlée

Almond florentine, wild berries



[FULL MENU](#)

[BACK TO CONTENTS](#)

THE BARS & RESTAURANTS



KAI SUSHI BAR

KAI means sea in Japanese. During the summer, enjoy delicious Sushi, Sashimi and Maki at Kai with a sea view and a cold Asahi beer.

Hours: 6PM – 11PM

Days: TUE, WED, THU, FRI, SAT, SUN

Cuisine: Japanese

Vibe: Relaxed Contemporary

Season: May - October

RESERVATIONS: 3343



MENU PREVIEW

NIGIRI & SASHIMI

Salmon | Tuna | Sea Bass | Prawn

MAKI

California

Crab, orange tobiko, cucumber, avocado, mayo

Ebi Tempura

Prawn tempura, spicy mayo, cucumber, avocado, teriyaki

Rainbow

Tuna, salmon, sea bass, crab meat, avocado, spicy mayo, black tobiko

[FULL MENU](#)

[BACK TO CONTENTS](#)

THE BARS & RESTAURANTS



LOUNGE BAR & GRILL

Coffee, cocktails and other refreshments are available throughout the day at the Lounge Bar & Terrace.

Our Bar & Grill menu specializes in seasoned chops, prime steaks and fish fresh off the grill, best enjoyed with a glass of wine from one of our budding local wineries.

Our international All Day Dining menu features the Classics: burgers, salads, pizzas and sandwiches.

Hours: 10AM – 1AM

Days: Everyday

Cuisine: International

Vibe: Smart Casual

Season: All Year Round

MENU PREVIEW

CLUB SANDWICH

Chicken, bacon, egg, lettuce, tomato, mayo Sides: fries, coleslaw

SUMMER LINGUINE

Tiger prawns, rosemary, zucchini, fennel, ouzo-cream sauce

TRUFFLE BLANCHE PIZZA

Cream sauce, pancetta, Portobello mushrooms, mozzarella, rocket,

IBERICO PORK

Sweet potato purée, apple chutney

RIB-EYE STEAK 300g

Garnish: truffle potato purée

WHOLE SEA BASS

Olive oil and lemon

[FULL MENU](#)



THE LOUNGE BAR



[BACK TO CONTENTS](#)

THE BARS & RESTAURANTS



MED RESTOBAR

Med is a casual eatery a few feet away from the pool and the sea. During the summer try local food infused with Chef Z's favourite Cypriot flavours: mastic, oregano, cumin, cinnamon and citrus. The bar is open throughout the day serving refreshments and a casual poolside snack menu. Smoothies, Greek style iced lattes and fruity cocktails come highly-recommended while soaking up the summer sun.

Hours: 9AM – 6PM

Days: Everyday

Cuisine: Cyprus Fusion

Vibe: Casual, Swimwear

Season: May – November

MENU PREVIEW

HALLOUMI SALAD

Mixed leaves, tomato marmalade, cherry tomatoes, pine nuts, crispy pitta, mint oil

PRAWN SPAGHETTI

Bell peppers, ouzo, crumbled Feta cheese, cherry tomatoes

CYPRUS PIZZA

Tomato sauce, mozzarella, chunky Halloumi, drunken red-wine sausage

CHICKEN SOUVLAKI

Greek pitta, tzatziki, Village salad

LAMB KLEFTIKO

Oven-baked potatoes, Village salad

FRIED SQUID

Fries, lemon, tartar sauce

[FULL MENU](#)

med.
RESTO-BAR



[BACK TO CONTENTS](#)

THE BARS & RESTAURANTS

HAVEN

Start your day by enjoying breakfast with a sea view at the Haven Restaurant & Terrace. Our buffet features cooked-to-order pancakes, omelettes, poached eggs and a section dedicated to local breakfast favourites such as Greek style yoghurt and fresh Mediterranean fruit, as well as the usual spread of English and Continental items.

Hours: Weekdays 7AM – 10AM
Weekends 7AM – 10.30AM

Days: Everyday

Cuisine: Continental, English, Local

Vibe: Casual

Season: All Year Round

[FULL MENU](#)



ROOM SERVICE

Fancy staying in? We've got you covered. Order 24/7. Please remove the Do Not Disturb card from your door. Dial 14.

[BREAKFAST MENU 07:00 - 11:00HRS](#)

[ALL DAY MENU 11:00 - 23:00 HRS](#)

[LATE NIGHT MENU 23:00 - 07:00HRS](#)

Delivery Charge: €5



THE BEACH

Relax by the beach throughout the summer and enjoy a variety of take-away salads, sandwiches and wraps served from Med Pool Bar. Fresh juices, iced coffee and ice-creams are also available to order from the sunbed attendant and waiters.

Hours: 10AM – 6PM

Days: Everyday

Cuisine: International

Vibe: Swimwear

Season: May – October

[FULL MENU](#)



[BACK TO CONTENTS](#)

SPA & WELLNESS



Step into a safe haven by the sea and relax in our seafront gardens lined with tropical palms and fragrant pine trees.

MORE INFO: 3316

SANDY BEACH

Sunbeds free for hotel guests
Shallow bay entry or stair entry
Municipal lifeguard (summer)
Limassol Marine Protected Area

OUTDOOR POOL

Section with water jets
Depth: 1.2m | Length: 20m | Width: 11m
Hours | 06:00 - sunset

GAMES

Table Tennis | Indoor Pool Garden
Billiards | Med Pool Bar

SEA SPORTS

NOA WAKE SCHOOL

Wakeboarding
150 metres from the hotel
Phone: 97 762310

POWER BEACH

Beach gym
80 metres from the hotel
97 725520

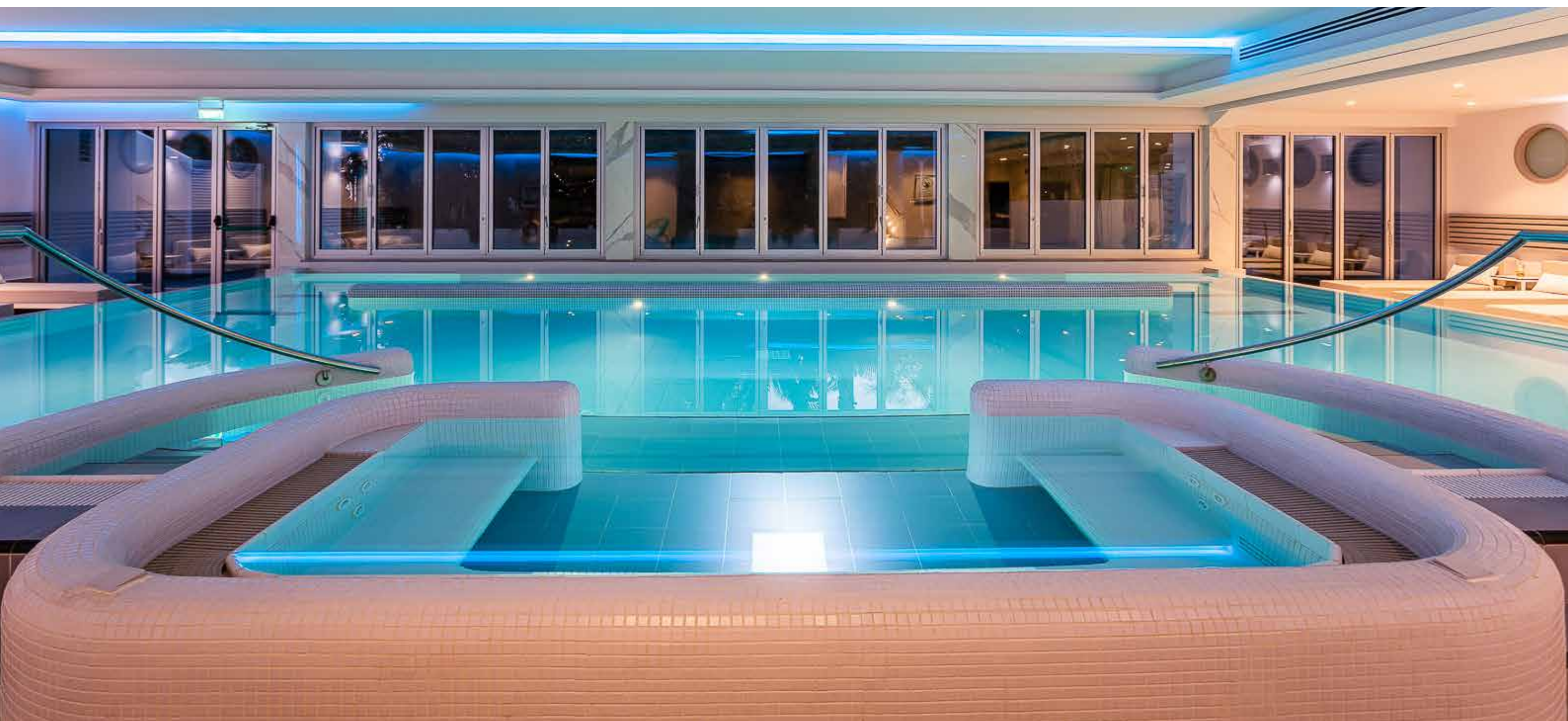
BEACH VOLLEYBALL ACADEMY

Beach Volley
150 metres from the hotel
Phone: 99 355243



[BACK TO CONTENTS](#)

SPA & WELLNESS



INDOOR POOL

Free for hotel guests
Section for swimming laps
Section with hot tub
Depth: 1.2m | Length: 13m | Width: 8m
Heated in winter: 29°C - 30°C
Hours | 06:00 - 21:00 hrs
Quiet Zone | 16.00 – 21.00 hrs



SAUNA

Free for hotel guests
Heated to 80°C - 90°C
Hours | 08:00 - 20:00 hrs



STEAM ROOM

Free for hotel guests
Hours | 08:00 - 20:00 hrs



GYM

MACHINES

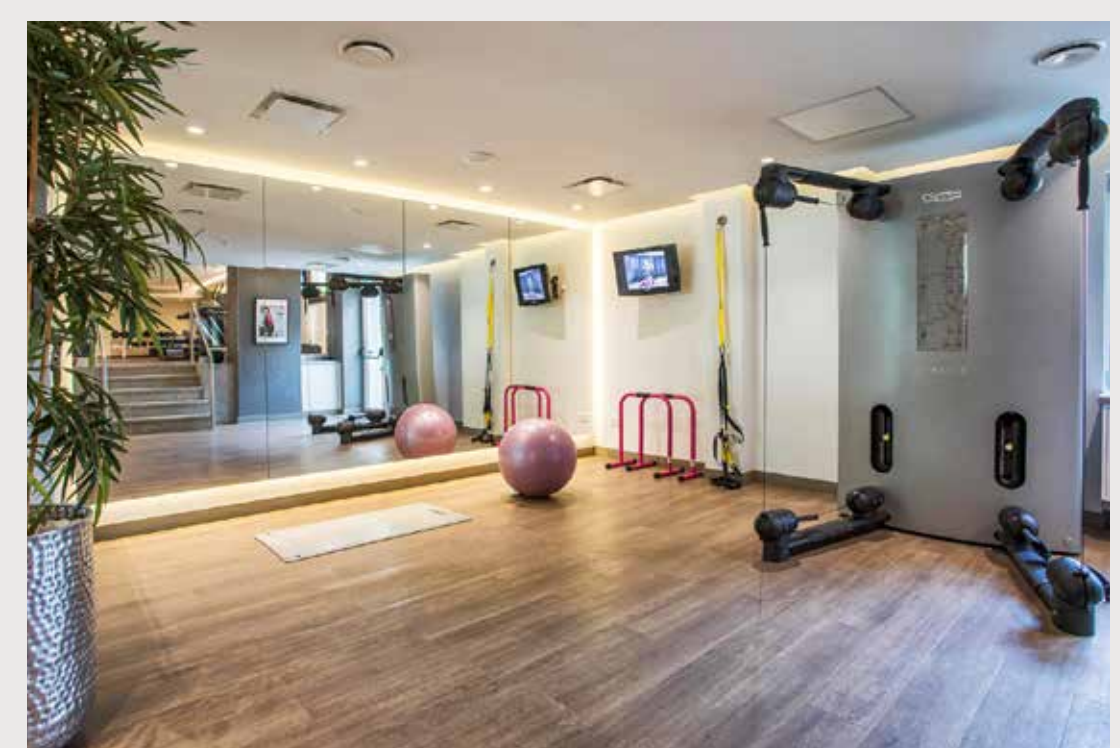
Kinesis One Multi-Gym, Cross Trainer
Elliptical, Treadmills, Chest Press
Leg Curl, Low Row, Recumbent Bike,
Upright Bike

FUNCTIONAL TRAINING

Benches, Free Weights, Equalizer, TRX,
Battle Ropes, Slam Balls, Gym Balls,
Kettlebells, Plyo Box, Mini Bosu Ball,
Skipping Rope

RUNNING

Fancy a run? We recommend running
outdoors along the sea or through the
Dassoudi Eucalyptus forest. [MAP](#)



[BACK TO CONTENTS](#)

SPA & WELLNESS



QUICK SPA

Revitalize your body, mind and soul at Quick Spa By The Sea.

MORE INFO: 3357

[CLICK TO BOOK ONLINE](#)



MASSAGES

- Head Dry
- Feet Dry
- Four Hand Relax
- Thai Fusion with Oil
- Thai Floor Traditional
- Thai Dry with Feet
- Thai Royal Lu Ba Kop
- Sport Deep Tissue
- Pregnancy
- Relax
- Lymphatic
- Couple Thai Fusion With Oil
- Couple Relax
- Couple Back & Shoulder



FACE

- Face Mini Renewing
- RF & Ultrasound
- Rehydrator
- Oil Controller
- De-Ageing
- Oxygen Treatment
- Make-Up
- Eyebrows Reshape



BODY

- Energizing Body Scrub
- Detox & Shine Scrub
- Detox Thalasso Wrap
- After Sun Soothing
- Cellulite

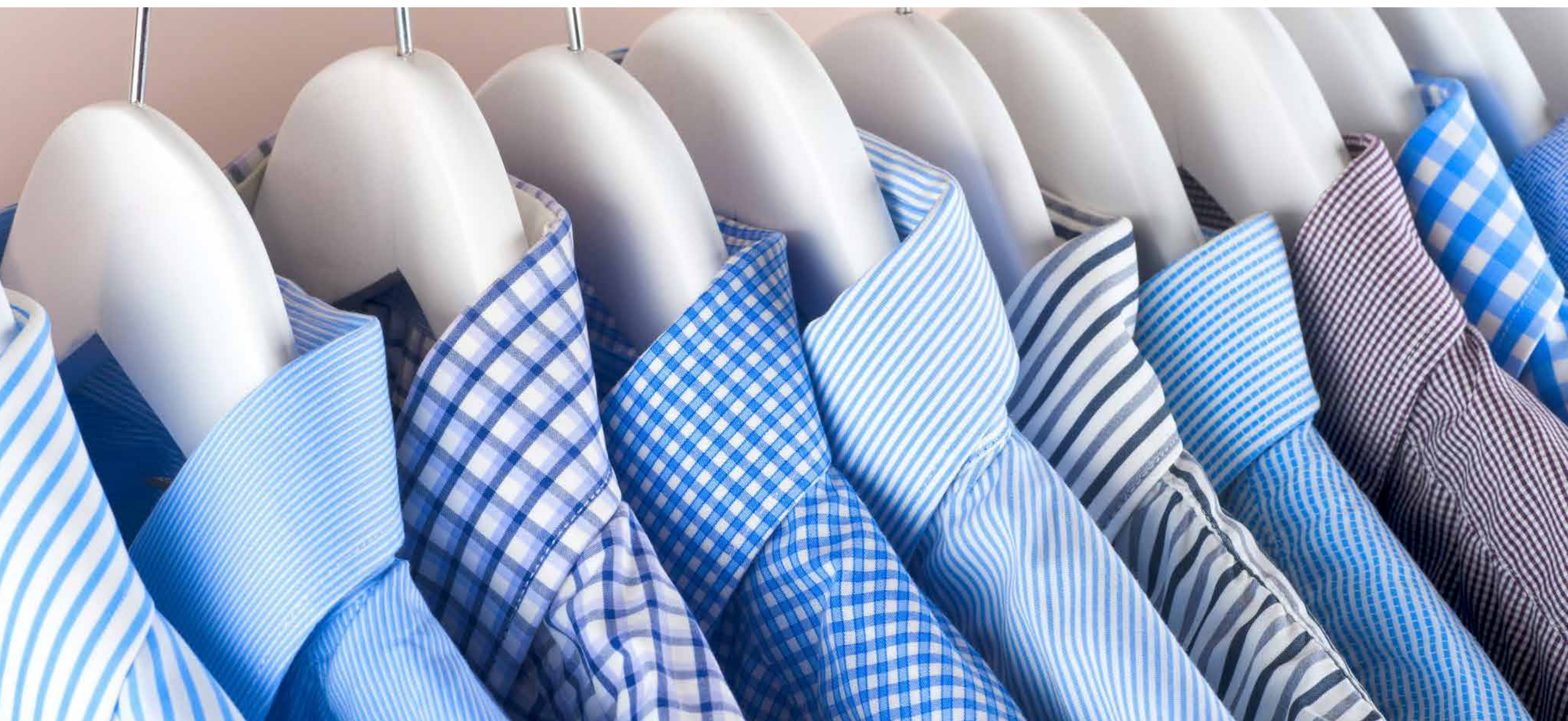


NAILS

- Manicure: Polish, Spa, Durable
- Pedicure: Polish, Spa, Durable

[BACK TO CONTENTS](#)

THE SERVICES



We're here to make your stay memorable. Let us know what you need and we'll do our best to make it happen.

LAUNDRY

If you would like us to launder your clothes, please drop off your laundry at the Front Desk OR call the Front Desk #11 to arrange collection from your room. Kindly complete the laundry list which is hanging in your wardrobe.

REGULAR SERVICE

MONDAY - SATURDAY

YOU HAND IN BY 9:45AM,
WE DELIVER BACK BY 4PM

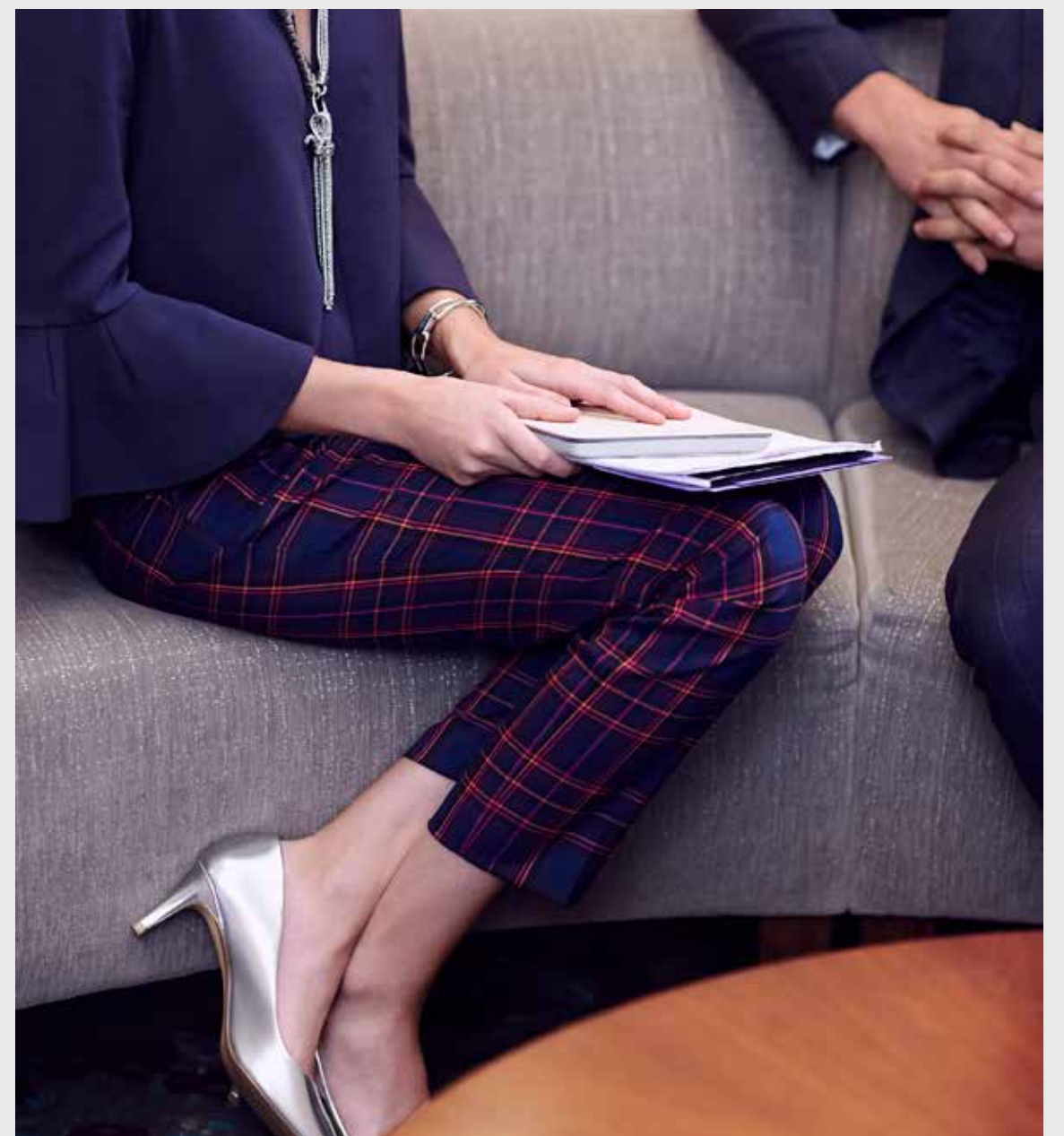
EXPRESS SERVICE

MONDAY - FRIDAY

YOU HAND IN BY 11:45AM,
WE DELIVER BACK BY 4PM

NO SERVICE

SUNDAYS & PUBLIC HOLIDAYS



[BACK TO CONTENTS](#)

THE SERVICES

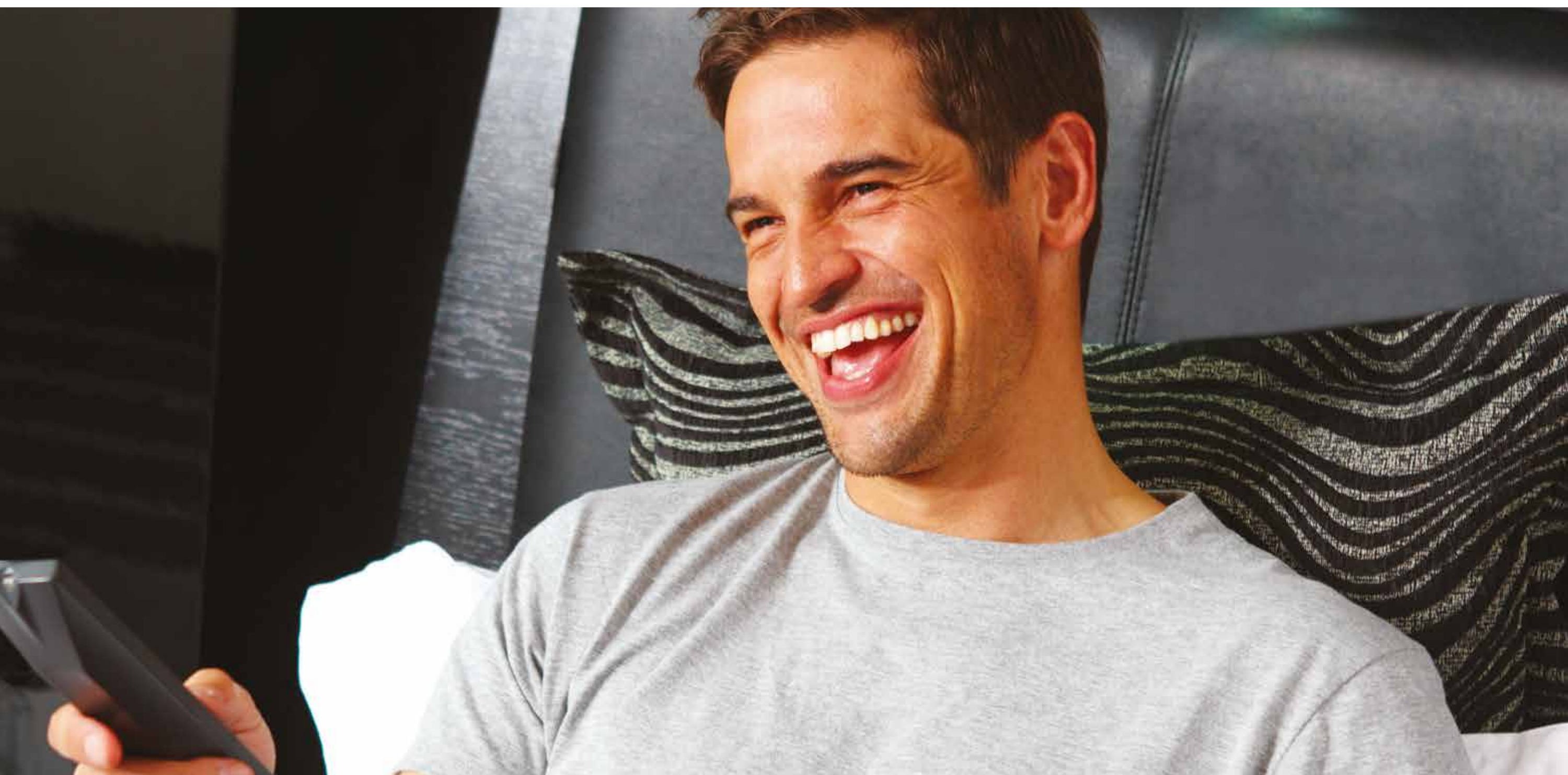


TV CHANNELS

1	CNN INTERNATIONAL	ENGLISH
2	BBC WORLD NEWS	ENGLISH
3	BLOOMBERG EUROPE	ENGLISH
4	RTL Austria	ENGLISH
5	EUROSPORT 1	GERMAN
6	EURONEWS	GERMAN
7	VOX UP	ENGLISH
8	SUPPER RTLA	ITALIAN
9	VOX Austria	ITALIAN
10	RAI NEWS 24	RUSSIAN
11	RAI 1	RUSSIAN
12	1 TVRUS EUROPE	RUSSIAN
13	8 TV RU	RUSSIAN
14	RUS BESTSELLER	RUSSIAN
15	THT	RUSSIAN
16	ROSSIYA 24	ARABIC
17	CN 12 KESHET	ARABIC
18	CN 13 KESHET	ARABIC
19	MBC1	ARABIC
20	MBC2	ARABIC
21	MBC3	ARABIC
22	SKY NEWS ARABIA	ARABIC
23	MBC ACTION	ARABIC
24	CGTN	ARABIC
25	SSBC	ARABIC
26	RTR	ARABIC
27	TIVI 5 MONDE	FRANCE
28	IQRA TV	LIBANESE
29	JORDAN TV	LIBANESE
30	RTD	LIBANESE
31	FRANCE 24	ARABIC
32	TELELIBAN TV	LIBANESE

[BACK TO CONTENTS](#)

THE SERVICES



TV CHANNELS

33 EURONEWS	GREEK
34 RIK 1	GREEK
35 RIK2	GREEK
36 ERT	GREEK
37 RIK HD	GREEK
38 SIGMA	GREEK
39 MEGA	GREEK
40 ANTI	GREEK
41 EXTRA	GREEK
42 PLUS CY	GREEK
43 CAPITAL	GREEK

RADIO CHANNELS

44 PROTO PROGRAMMA	GREEK
45 DEFTERO PROGRAMMA	MULTILINGUAL
46 TRITO PROGRAMMA	GREEK
47 TETARTO PROGRAMMA	GREEK

THE SERVICES



FORGET SOMETHING?

We've got you covered! Here's a list of items available at the Front Desk.

- Toothbrush
- Toothpaste
- Shaving set
- Nail file
- Sewing kit
- Comb
- Cotton pads
- Cotton buds
- Shower Cap
- Shoe Mitt
- Sanitary Pads

CONVENIENCES

PORTER

CONCIERGE

WAKE-UP CALLS

Please contact the Front Desk #11 to schedule.

COMPUTER KIOSK

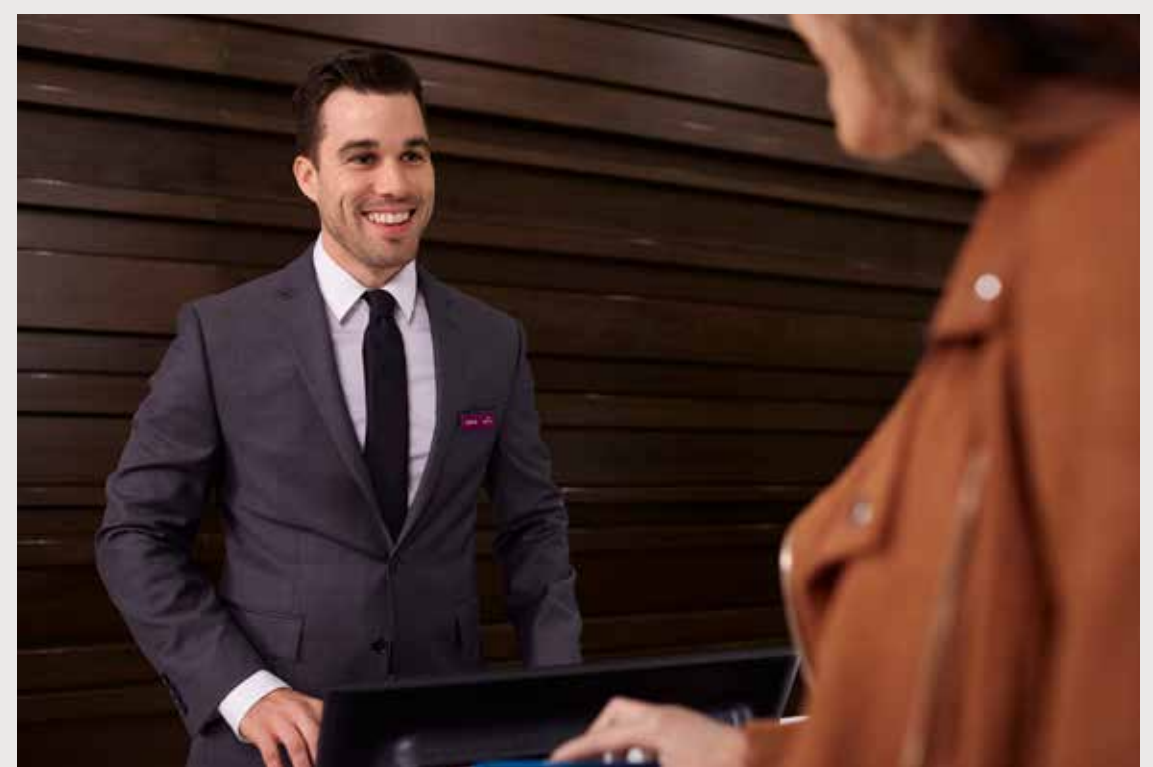
Located in the lobby

POOL ACCESSORIES

Various pool related items such as sunscreen can be purchased at the pool reception.

ATM

Located across the road



[BACK TO CONTENTS](#)

THE HOTEL

BEST LOCATION

Limassol is known as the most vibrant and cosmopolitan city in Cyprus. And being the closest beach hotel to the city centre, we are the best located among all Limassol hotels. Located right at the start of the Limassol seafront promenade, a stay at the Crowne Plaza Limassol hotel places you on the doorstep of the very best our buzzing coastal city has to offer, with the Medieval Castle Square, Old Town hotspots and Limassol Marina all a pleasant seafront walk or 7-minute drive away.

AN IHG HOTEL

We're the only premium international brand hotel in Limassol, combining the quality and assurance of a global brand with authentic Cypriot hospitality. As an IHG Hotel, we're committed to achieving the highest levels of cleanliness and follow a rigorous deep cleaning and disinfection process of guest rooms and public areas, to deliver the IHG Clean Promise to all our guests.

FANTASTIC FACILITIES

Nestled in lush landscaped gardens perched above a beautiful sandy bay, at our Limassol spa hotel you can enjoy direct beach access, indoor and outdoor pools and a brand new spa offering a range of relaxing treatments and plenty of opportunities to relax and unwind. Free access to our 24 hour gym, steam room, shock shower and sauna is available to all hotel residents. Pool day passes and spa memberships are available to non-residents.



[BACK TO CONTENTS](#)

THE ROOMS



PREMIUM SEAVIEW

Illuminated ash panels and turquoise upholstery offset magnificent Mediterranean views in these premium rooms which feature abundant natural light. Fall asleep to the sound of the waves and enjoy the fresh sea air from your private balcony overlooking the hotel gardens or pool.

SUPERIOR SEAVIEW WITH BALCONY

Enjoy a unique proximity to the sea and exclusive views of the Limassol bay in spacious first floor rooms featuring couch corners and infinity balconies overlooking the hotel's overflow pool.

SUPERIOR SEA VIEW WITH TERRACE

Soak up the sunshine from your private Mediterranean terrace furnished with sun-loungers, and enjoy unobstructed sea views from the comfort of your king-size bed thanks to perfectly placed floor-to-ceiling windows.

SELECT CITY VIEW

Earth tones and lilac hues adorn comfortable rooms designed to offer a great night's sleep. Soft lighting and black-out curtains will ensure you rest easy, all night long.

TWO DOUBLE BEDS CITY VIEW

Secure all the space you need in comfortable city view rooms perfectly suited for families. Featuring black-out curtains, triple-glazing, and two full-sized double beds, you can rest easy while the kids will get a great night's sleep and wake up feeling refreshed.



PREMIUM SEAVIEW



SUPERIOR SEAVIEW



SUPERIOR SEAVIEW



SELECT CITY VIEW



TWO DOUBLE BEDS CITY VIEW

[BACK TO CONTENTS](#)

THE SUITES

OLYMPIAN SUITE

Opulent shades of blue and gold bespeak the quiet luxury of our largest suite. Located on the top floor, on the south-west corner of the hotel, the Olympian Executive Suite boasts a unique view of the Limassol Bay offering panoramic sea views stretching across the Olympic coastline all the way to Akrotiri Bay. This open-plan suite affords a comfortable living space and dressing area, as well as a large marble bathroom featuring a walk-in rain shower and luxurious hydro massage bath tub.



OLYMPIAN SUITE



OLYMPIAN SUITE

BAY VIEW SUITE

Enjoy unforgettable Mediterranean sunrises and sunsets from the balcony of this open-plan suite perched elegantly above the Limassol Bay. Located on the top floor, the Bay View Suite affords a cosy living space featuring original artwork by the notable local artist Maria Doriti, as well as a marble bathroom featuring a walk-in rain shower and hydro massage bath tub.



BAY VIEW SUITE



BAY VIEW SUITE

TWO ROOM SUITE

Located on the top floor, this two room suite features an en suite bedroom and a separate en suite living room, both overlooking the crystal blue waters of the Mediterranean. Fall asleep to the sound of the waves in your plush king-size bed, and enjoy breathtaking sea views from your spacious living room furnished with a comfy couch corner and large dining/work table.



TWO ROOM SUITE



TWO ROOM SUITE

[BACK TO CONTENTS](#)

MEETINGS



At Crowne Plaza® your success matters. Combining a prime city centre location and renovated sea view conference rooms, with inspiring meeting menus and a dedicated Crowne Meetings Director, we can help you host meetings with a WOW factor. If you're planning a conference in Limassol, meet with confidence at Crowne Plaza®: the only premium international brand hotel in Limassol and the city's only business hotel on the beach.

[CLICK HERE TO BOOK A MEETING ROOM](#)



THE BALLROOM



THE BALLROOM



THE BALLROOM



FOYER

[BACK TO CONTENTS](#)

MEETINGS



SUITE SEA

Named Suite Sea due to its amazing view of the sea and gardens, this venue is adjacent to the Ballroom. Suite Sea can either be rented as a break-out room for larger meetings hosted in the Ballroom or as a stand-alone venue. Coffee breaks can either be taken inside the venue or enjoyed outdoors on our covered terrace overlooking the sea. The meeting room is furnished with retractable zebra blinds allowing you to block out light during meetings requiring projection while still being able to enjoy the sea view.



SUITE SEA



SUITE SEA

EXECUTIVE BOARDROOM

Located on the ground floor, the Executive Boardroom is easily accessible from the hotel's main entrance. Coffee breaks can be arranged in the meeting room or on a private section of our sea view Lobby Terrace. The meeting room comes equipped with fully retractable black-out blinds, a 62" LCD TV and mini computer. All you need to do is bring along your USB stick. Plug & Play.



EXECUTIVE BOARDROOM

OVAL MEETING ROOM

The Oval Room boasts a prime view of the Oval building, one of Limassol's most iconic modern buildings. Decorated with quotes from industry leaders and business gurus, our cosy top-floor meeting room aims to inspire delegates to think outside the box and come up with great ideas that have power to transform the way their businesses operate. If you're looking for a small meeting room to host a productive off-site brainstorming session or a private space to explore a new business opportunity, the Oval Room may be the perfect spot.



THE OVAL

MED MEETING ROOM

The latest addition to our meeting rooms, this venue is only available from November until March. Boasting a sea view and coffee breaks by the sea, this recently refurbished meeting room, can even come equipped with a billiards table for an extra fun break.



MED MEETING ROOM

[BACK TO CONTENTS](#)

THE DESTINATION GUIDE



THE MOUNTAINS

Kilometres of green mountains covered in fragrant pine trees may not be the first image that comes to mind when imagining your trip to Cyprus. Just a 45-minute drive from Limassol, discover the Troodos mountains. Check out the Atalanti and Artemis hiking trails, visit the haunted Berengaria hotel in Prodromos, visit the impressive Kykkos monastery, and purchase your favourite Cyprus delights from the market in Troodos Square.

THE AZURE TRAIL

Take the old road between Limassol and Paphos to unlock the stunning azure trail. Start off at the Ancient Curium amphitheatre, constructed in the 2nd Century BC on a cliff by the sea. A little further along, descend on the deserted bay at Zapallo to discover a unique swimmers' paradise. If you're in the mood for a waterfront hike, walk the Cape Aspro seaside trail in Pissouri to see striking limestone cliffs towering over the water's edge. Finish the adventure by climbing Aphrodite's rock and enjoying the sunset at Aphrodite's mythical birthplace.

CHASING WATERFALLS

The Caledonia, Millomeri and Chantara waterfalls are all located within a 20 minute drive of each other. To reach Caledonia Falls, hike the mountainous trail from Psilo Dentro; Millomeri and Chantara are accessible by car. Complete the adventure by visiting Tzielefos, Treis Elies and Roudia, three of the most beautiful medieval bridges in Cyprus. Built by the Venetians in the 15th Century, the bridges are remarkably well preserved and popular picnic spots all year round.



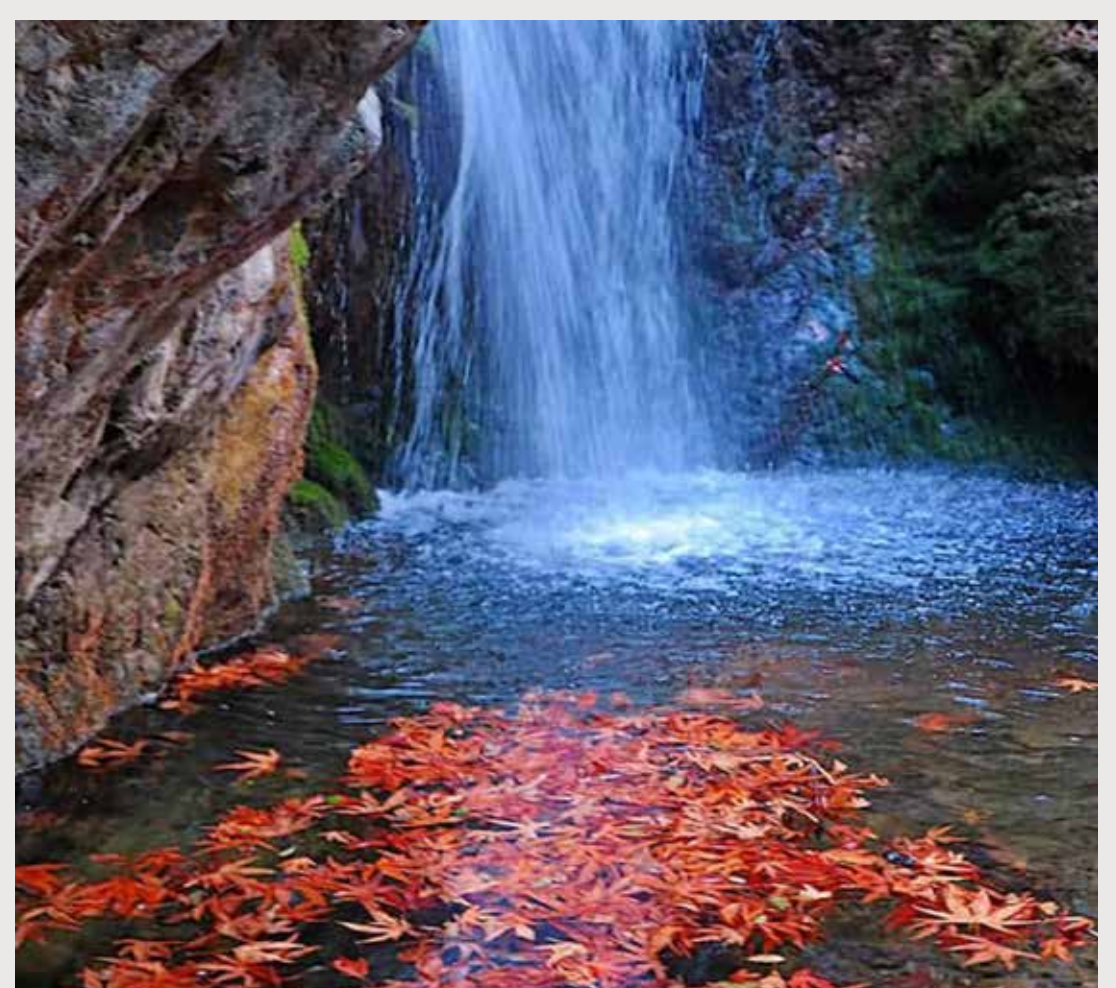
THE MOUNTAINS



THE AZURE TRAIL



THE MOUNTAINS



CHASING WATERFALLS

[BACK TO CONTENTS](#)

THE DESTINATION GUIDE



DAMS & VILLAGES

Drive up to Kouris, the largest Dam in Cyprus, and discover the ruined Church of St Nicholas submerged in the water. The beautiful village of Lofou is only a 15 minute drive away; walk down the cobblestone streets to enjoy a Cyprus coffee and local story at the «kafeneio» coffee shop. Omodhos is a little further afield; at the heart of the village discover the impressive Monastery of the Holy Cross – one of the oldest and most historic monasteries of the island. And don't miss the chance to take a photo in front of the famous blue door.

LIMASSOL

Limassol is a city best discovered by night. Set off from the Crowne Plaza Limassol at dusk and walk along the seafront promenade which connects the hotel to the Limassol Marina. On the way, walk the Enaerios pier, see the sculptures in the Prokymea seafront park and grab a bite to eat at the buzzing Old Port or Limassol Marina. On your way back, walk by our Medieval Castle, see the Grand mosque, stroll down Athinon Street to see our vibrant street art, and step into Zik-Zak street to get a real feel for the local scene. By the end of the tour you will understand why Cyprus is known as the crossroads of civilizations.

LIMASSOL GUIDE



DAMS & VILLAGES



DAMS & VILLAGES



COSMOPOLITAN LIMASSOL



[BACK TO CONTENTS](#)

SUSTAINABILITY



As an IHG hotel, we've embarked on Journey to Tomorrow; a set of commitments to drive change for people, communities and the planet over the next 10 years. As part of this journey, we are currently securing our **Green Key Certification**. While we're not quite there yet, here's what we've done and will continue to do, as we pave the way for a sustainable future.

MOTION SENSOR SWITCHES

This means the electricity will switch off in your room if no movement is detected. There is a plug marked with a red sticker which remains on at all times.

MAGNETIC SENSORS

Magnetic sensors for the balcony doors and windows means that the HVAC will switch off if either the balcony door or window is open.

LOW EMISSIVITY INSULATING GLASS

This means the glass in your room is energy efficient and reflects the heat.

SOLAR SHADING

Installed in South facing rooms, solar shading also protects sea view rooms from the sun keeping your room cooler.

Drawing your curtain when you leave the room also helps!

TOWEL REUSE PROGRAM

Towels on the floor: Please replace them. Towels on the rail: I will re-use them.

BULK-SIZE BATHROOM AMENITIES

We've switched to bulk-size bathroom amenities which has significantly reduced our reliance on single-use plastics.



[BACK TO CONTENTS](#)

SUSTAINABILITY



RECYCLING PROGRAM

In addition to the recycling we do back-of-house we also **invite you to help** with sorting by using the designated bins in our lift lobbies. Our bin-top stickers will guide you.

LINEN REUSE PROGRAM

Sheets are changed every third night in an effort to reduce water pollution. However, should you wish to have your sheets changed regularly please contact House Keeping.

HOTEL SYSTEMS

- IHG Green Engage environmental sustainability system
- Photovoltaic system used to operate outdoor pool
- Heat pump water heater used for indoor pool
- Heat recovery systems installed in the spa and ballroom
- Solar water storage tanks
- Roof insulation
- LED lighting, lighting modulation and natural light
- Installation of a REACH certified Carbon Remover Tank for kitchen cleaning

WASTE REDUCTION

- Clean food waste used as animal feed
- Repurposing of condemned linen
- Recycling programme for coffee capsules
- Repurposing bean coffee waste as fertilizer
- Reduction in single-use products where possible
- Selection of recyclable single-use products



[BACK TO CONTENTS](#)



DIGITAL MENUS

You can use QR codes across the hotel and this will help us to reduce printed materials in circulation.

EV CHARGING STATION

Electric vehicle charging station is available in West carpark. Download the Joltie way app to use this service.

Cost: €0.476 per kWh

SUPPORTING SMALL LOCAL BUSINESS OWNERS

We make a point of supporting small business owners whenever possible. This includes actively sourcing food and beverages from micro-producers.

Akaki Grove, Akaki **BIO Certified by LACON**

Oranges, mandarins and grapefruits
Virgin Olive Oil

Yiannis Panagiotou, Kyperounta

Apples, peaches, nectarines and apricots

George's Bakery & Confectionery, Omodos

All breakfast rusks

'To Horko' Dairy farm, Kofinou

Anari cheese, Halloumi cheese

We are also very proud of our **“open call to local artists”** initiative. Our aim is to support local artists and offer them a free platform to display their works to local and international audiences alike. Artists are invited to exhibit their works in the hotel lobby and their works are available for sale directly from the artist.





ABOUT GREEN KEY

Created in Denmark in 1994, Green Key is a leading voluntary standard of environmental responsibility and sustainable operational excellence within the hospitality and tourism industry. Our hotel has undergone assessments to ensure compliance with Green Key standards relating to energy efficiency, water conservation, waste reduction and the implementation of seamlessly integrated sustainable practices across our hotel, without compromising on quality.

For us, the Green Key is not just a symbol; it's a commitment to environmental sustainability and responsible tourism. Join us in making a positive impact and enjoy amenities and services which align with our shared sustainable values. Care to learn more? Here's what we've done and will continue to do, as we pave the way for a more sustainable future.